

”Making it safe and comfortable to take a shower”



## ROPOX SHOWER/CHANGING BED

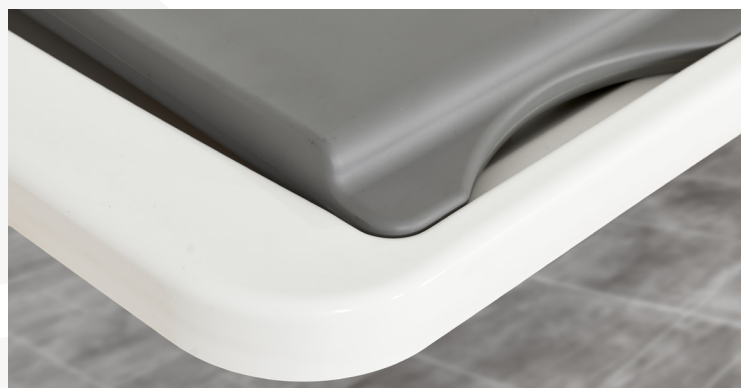
### SAFE AND EASY TO USE

The shower/changing bed gives the user optimum comfort and safety, and the helper gets the best possible working position. This provides security and satisfaction for both parties.

The bed is made of double-sided slats. One side of the slat curves slightly downwards ensuring a safe position for the person bathing. The other side curves slightly upwards making it easy for a helper to turn the user on the side when using the bed for changing clothes.

It is easy to adjust the height of the bed with the hand control, and the bed can quickly be adjusted to the best position, e.g. for a wheelchair so transferring a user onto the bed is smooth and easy.

The shower/changing bed is cleaning-friendly, and can be folded up when not in use to save space in the bathroom.

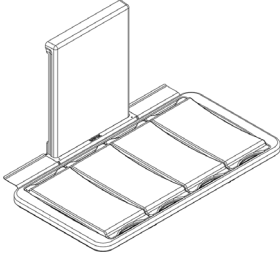
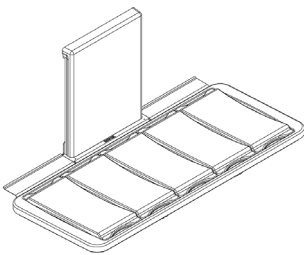
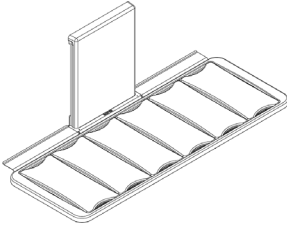


# ROPOX SHOWER/CHANGING BED

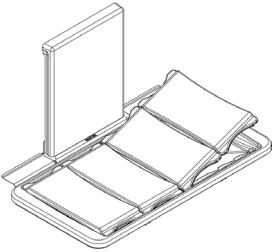
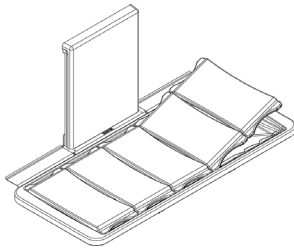
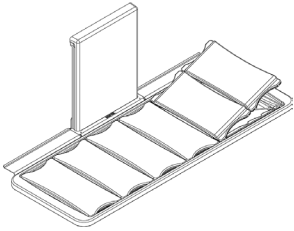
Height adjustment: 70 cm (30-100 cm) above floor

Max. user weight: Testet acc. to DS/ISO 17966:2016  
Max. user weight 220 kg

## VARIANT/MODEL

SHOWER/CHANGING BED WITHOUT BACK SUPPORT		
		
146 cm Item no.: 40-25023	178 cm Item no.: 40-25026	210 cm Item no.: 40-25029

SHOWER/CHANGING BED WITH BACK SUPPORT		
		
146 cm Item no.: 40-25073	178 cm Item no.: 40-25076	210 cm Item no.: 40-25079

- The bed can be folded up to save space in the bathroom.
- The shower/changing bed includes an electrical hand control for easy height adjustment.
- The lying area is 18 cm shorter than the length of the shower/changing bed.

## ACCESSORIES

### Bed guard:

Item no.: 40-25034 for shower/changing bed 146 cm  
Item no.: 40-25036 for shower/changing bed 178 cm  
Item no.: 40-25035 for shower/changing bed 210 cm

### End guard:

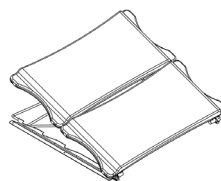
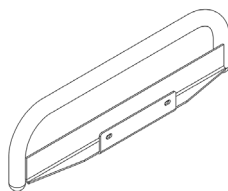
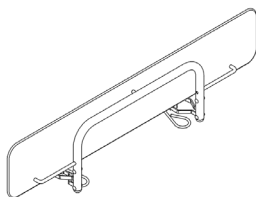
Item no.: 40-25038

### Back support:

Item no.: 40-25031

### Headrest:

Item no.: 40-25090



**NB!** Find more information about measurements, technical data, installation interfaces and much more under the product and in the instruction manuals on our website.

The items are produced according to the following Standard: DS / ISO 17966:2016

ROPOX A/S · Ringstedgade 221 · 4700 Naestved, Denmark – Phone: +45 5575 0500 · info@ropox.com · www.ropox.com

**ROPOX™**  
BETTER WAYS TO BETTER DAYS

– A PART OF AddLife®